



## CONTENITORI PER ELETTRONICA ENCLOSURES FOR ELECTRONICS

EL BAG SIMP S.r.l. - 20143 Milano - Via Watt 15/7  
Tel. +39 2 58106288 - Fax +39 2 89401339  
[www.elbag.net](http://www.elbag.net) - e-mail [info@elbag.net](mailto:info@elbag.net)  
C.F./P.IVA / VAT 13286120152

## SERIES CM..CB..DL

Series CM 20 and 36: the vertical enclosures for DIN rail EN 50022 and DIN EN 50035 can house one or more vertical pcb's, with the possibility to mount plug-in terminals and connectors of any type. It is very easy to have custom window on any side, simply by breaking the comb-wise walls. Custom machining on any side (holes, slots). On the front there is a pre-punched plate, useful for LED's or trimmers. The material is ABS/ PC-Blend, class V2 (UL94 V0 on request) in colours green RAL6017, grey RAL7035 and black. Special colours on request.

Series CM 32 and 48: the vertical enclosures for DIN rail EN 50022 and DIN EN 50035 can house one or more vertical pcb's, with the possibility to mount plug-in terminals and connectors of any type. It is very easy to have custom window on any side, simply by breaking part of the walls. Custom machining on any side (holes, slots). The material is ABS/ PC-Blend, class V2 (UL94 V0 on request) in colours green RAL6017, grey RAL7035 and black. Special colours on request.

Series CM 6..8..14: the vertical enclosures for DIN rail EN 50022 and DIN EN 50035 can house a vertical pcb, with the possibility to mount 6..8..14 terminals respectively. Custom machining on any side (holes, slots). The material is Noryl, class V2 (UL94 V0 on request) in colours green RAL6017, grey RAL7035 and black. Special colours on request.

Series CB 45 and 90: the vertical enclosures for DIN rail EN 50022 and DIN EN 50035 can house one or more vertical pcb's, with the possibility to mount plug-in terminals and connectors of any type. Custom machining on any side (holes, slots). The material is ABS/ PC-Blend, class V2 (UL94 V0 on request) in colours green RAL6017, grey RAL7035 and black. Special colours on request.

Series DLM..DLA: the modular multilevel enclosure can house several horizontal pcb's, 68 or 72 mm wide, and can be covered by suitable plastic cover. The side elements can be vented. Standard colours green RAL6017, grey RAL7035, and black.



CM 20



CM 36



CM 32



CM 48



CB 45



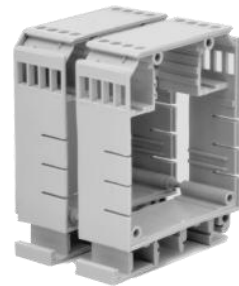
CB 90



DLA



DLM



CM 8